

## Release Notes – KMx Version 7.2



### Table of Contents

Release Notes – KMx Version 7.2	1
Dynamic Reports - Dynamic Sorting and Filter Controls	2
Master Class/Activity/Resource Schedule	3
Administrative Forms	4
Member Search Features	5
PowerPoint for Mobile Devices	6

## Dynamic Reports - Dynamic Sorting and Filter Controls

The screenshot displays the 'Certification Summary Report' interface. At the top, there are two controls: 'Enable Dynamic Sorting:' and 'Enable Dynamic Filter:', both set to 'yes' with a refresh icon. Below these is a search box containing 'kmsi'. The report table has four columns: 'Certification', 'Percent Complete', 'Name', and 'Company'. The 'Name' column header has a sorting control (a minus sign in a circle). The table contains six rows of data, alternating between light and dark gray background colors.

Certification	Percent Complete	Name	Company
KMx Administrator	.00	Brandi Lee	kmsi
KMx Administrator	.00	Christina	KMSI
KMx Administrator	.00	Jack E. Lee	KMSI
KMx Administrator	.00	Larry Bielawski	KMSI
KMx Administrator	.00	Sharon	KMSI
KMx Administrator	.00	Terry McPherson	KMSI

- Header & Alternating Row Styling
- Clickable Sorting Controls for Each Column
- Query/Filtering Tools

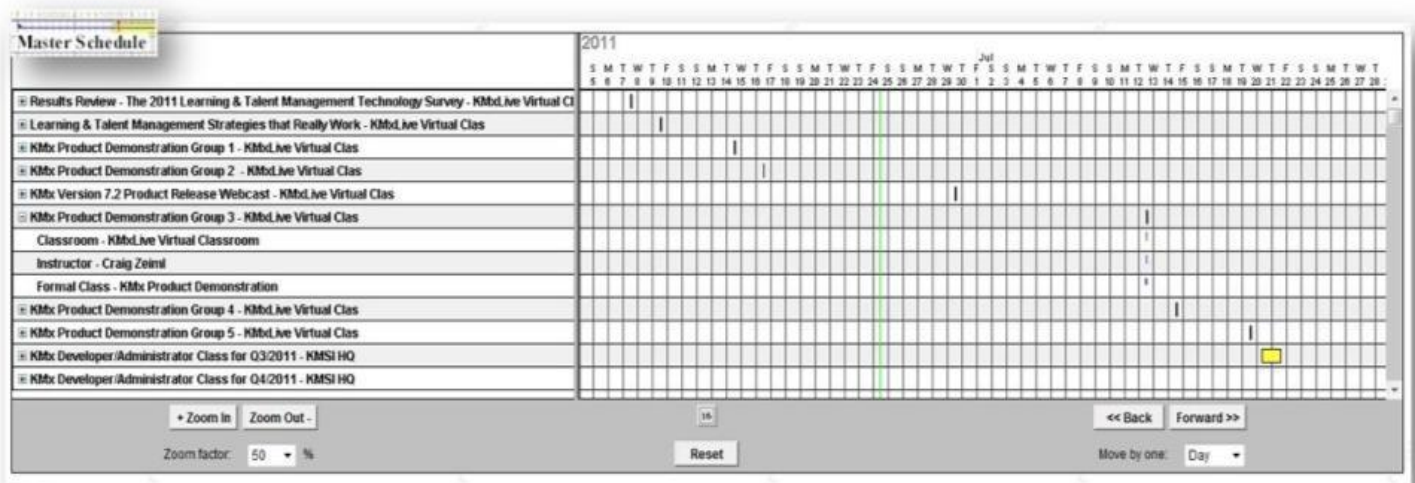
KMx Dynamic Reports has been updated to provide the ability for administrators to designate new sorting and filtering options. The Dynamic Sorting option provides a stylized report template that includes a special header row that enables by column sorting of the report output. The sorting is accomplished by the user's browser and does not require the report to be regenerated. Dynamic Sorting should not be enabled for reports that produce more than 2,000 rows as this may generate warnings that a process is taking a long time to complete when conducting a sort.

The Enable Dynamic Filtering option is dependent on the Dynamic Sorting option being set to "Yes". Enabling Dynamic Filtering provides a search box at the top of the report that will enable a user to enter a word or phrase to be searched for within the output of the report. The report will remove rows that are not applicable to the word/phrase entered. Sorting of the report can be accomplished on the filtered results.

Used together, these features can enable a user to run a report that has been setup by an administrator and further tune the output prior to printing. The feature also provides an easy way for users to query the KMx data system based on parameters established in the report setup and enhanced by the sort/filter options.

The help files associated with each Dynamic Report Type have been updated to include extended field descriptions and use the dynamic sorting and filtering capabilities.

## Master Class/Activity/Resource Schedule



- Default View Changed to Collapsed
- Provides Easier Viewing and Printing of a Larger Number of Scheduled Classes

The Master Class/Activity/Resource Schedule has been modified to start with a collapsed tree of displayed classes and dependant items (resources and activities). This approach will make it much easier for clients with hundreds or even thousands of upcoming scheduled classes to view and find information about a particular class. This approach also provides a view more suitable for printing.

## Administrative Forms

The screenshot shows the 'Review/Modify Class Record' form. At the top right, there is an 'Advanced Feature Toggle' icon. The form contains several fields with different backgrounds: green for required entries, white for standard options, and grey for advanced features. Annotations with arrows point to these categories:

- Required Entries:** Points to the 'Course' field (Learning & Talent Management Survey Review), 'Location' field (KMXLive Virtual Classroom), 'Start Date' field (06/07/2011 14:00:00), 'End Date' field (06/07/2011 15:00:00), and 'Class Title/ Information' field (Results Review - The 2011 Learning & Talent Management Technology Survey).
- Advanced Features:** Points to the 'Date Preferred Pricing Ends' field (01/01/1990 09:00:00).
- Standard Options:** Points to the 'Responsible Instructor for Admin' field (Brandi Lee).

Other fields include 'Time Zone' (Eastern), 'Class Roster', 'Batch Enroll Members', 'Class Waitlist', 'Retrieve Attendance Verification Sheet', 'Upload Attendance Verification Sheet', 'Class Activities', 'Max Students (0=Closed)' (200), 'Minimum Students' (0), 'Current Students Enrolled' (117), 'K/S Table' (None), 'Message Board' (None), and 'Attendance Verification Req'd' (no).

All KMx Administrative Forms have been updated to ensure that “Required” data entry fields are clearly indicated with a green background when the form is displayed. Green fields must be completed in order for the record to be saved. Required field backgrounds will turn white once data entry in the field has commenced.

Should a required entry not be completed, the user will receive a warning if the user attempts to save the record in an incomplete state. This warning will also return the background color of the required entries to green to make it easy to identify which field(s) still requires an entry.

In addition, the Advanced Feature Toggle and associated form elements have been extended to ensure that the difference between Required (green), Standard (white) and Advanced (grey) options are clearly indicated. To enable an advanced field, select the Advanced Feature Toggle icon at the top of each form. Once set, the system will retain the Advanced Feature Toggle setting for all forms until the user logs out or re-toggles the selection.

Field background colors will still change to yellow if the current entry exceeds 85% of the field’s length and red when the entry is at the maximum field length.

## Member Search Features



Please select the field you want to search:

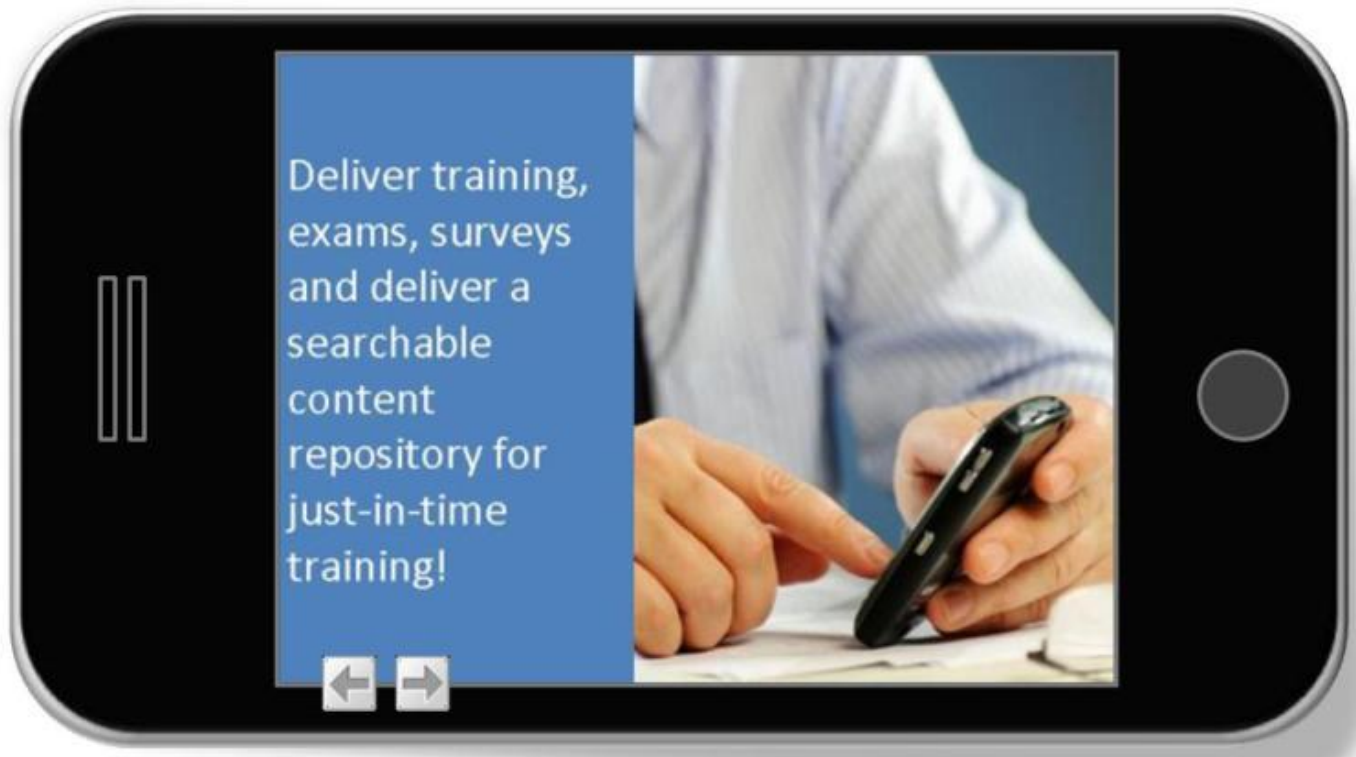
Member Name  Username  Member Email  Directory Services ID

Please Enter Member Search Criteria:

- Enables Selective Field Search
- Increases Search Result Accuracy
- 400% Faster Search Results

With many of our clients now exceeding 100,000 users, the speed and accuracy of the Member Search function has become critical to customer support and administrative personnel. In order to ensure fast and accurate searches, new options for Member Name, Username, Member Email and Directory Services ID have been added to the search input form.

To accomplish a search, select the appropriate type of search (name, email address, etc.) and then enter in the search string. The search response times will be significantly faster than the prior method which searched all names, email addresses, usernames and directory services identifiers for every search. The results should also be significantly more accurate by specifying the information to be searched for with the user supplied search string.



- Support for Android, iPhone/iPad/iPod, Blackberry, Kindle, Nook and other Mobile Devices
- Fully SCORM Compliant with Bookmarking, Completion Status Recording and Session-Time Management
- Also Provides Support for Safari, Firefox, Chrome and other Browsers

KMx has always supported the ability for developers to import Microsoft PowerPoint files and convert the files to SCORM conformant eLearning materials. In prior releases, the KMx output format for a converted PowerPoint deck would not function on a mobile device (except for Windows Mobile 7 devices).

In our latest release we have included the functionality for imported PowerPoint files to be rendered as HTML5 output files. These new output formats universally support all mobile devices, including the Android, iPhone/iPad/iPod, Blackberry, Kindle and Nook devices. Animations, audio and video embedded into a PowerPoint slide are not supported by these devices.

Microsoft Internet Explorer users will still enjoy a complete conversion of embedded animations, audio, video, timing sequences and other PowerPoint advanced features comparable to an Adobe Flash presentation, without the need for the Adobe Flash player.